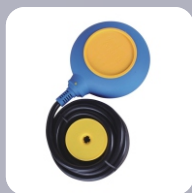


PRODUCT CATALOGUE



ELECTRICAL PRODUCTS

Introduction

Hongbao Electric Co.,Ltd.is a non-area exporting enterprise specializing in study,invention, production,sales,in formation and service in the power field,and is one of the earliest stock enterprise in China.Our former is Yueqing Zhenhua Stabilizer factory,and we establish Hongbao Electric Co.,Ltd,in 1988.In the exciting market competition,we have been regarding “enhance national industry” as our mission,basing on the hightechnology and doing our best to make ourself to be the great enterprise in China and in the world.Our annual production amount is more 30 % every year,and we are one of the greatest enterprise with the greatest scale,mot products and most protential development.

This company has 20 professional affiliated companies,over 500 cooperative firms,more than 300 interior sales points and 10 abroad trading agency.We have more than 2000 workers,150, 000 square meter workshop and our capital is more than RMB8 billion.Our porducts include photovoltctic control system,wind turbine generater frequency transfermer, soft starter,AC stabilizer,DC power supply,power Supply inverter,purifying power supply ,interrupt-resistance power supply,UPS intelligent Emergency Power Source,UPS Uninterrupted Power Supply, fullautomatic compensation power supply,switch power supply, circuit breaker,electricity meter series,storage batteries,electric welding machine and others of more than 50 series,over 2000 types.We gained fund honor awarded by China Science Commission.Hongbao Electric Co., Ltd.are chosen as the star enterprise,the advanced exporting enterprise,Accommended products of Zhejiang Province Customers by province government and city government,applying with the contract and credit enterprise,the gold customer of Construction Bank of China,AAA Credit enterprise and Zhejiang Province top 100 fax enterpies.



Hongbao Electric Co.,Ltd.is a member company of China Power Commission,administrator company of Zhejiang Province Power Commission, and we took part in making the draft of the standard of Consumer Stabilizer Power.Our products have passed the ISO9001 quality system, ISO14001 environment management system,and have got the electric equipment net permission from information industry of The People's Republic of Cina,the CE certificate of EU,UL certificate of U.S.A,CB certificate of Swissland ,CCC certificate and CQC certificate.All of our products are insured by People's Insurance Company of China.

Producing the best power supply is our pursuing target.This company has beening making greatest efforts to develop and study the latest products and we have got 153 patents;including all fields of electrics and electronics,great scale centrating circuits, min dealing machine,single slice machine,and these products are used widely in the production.The desingning technology affiliated by computer,intelligental power supply and digital control developed and used in the production are in the adranced point in China.At the same time,we have established the long-term cooperation relationship with electronics studying bureau of China Scienc College,Shanghai Fudan University,Zhejiang University,Fuzhou University respectively.

Nowadays,China entrance to WTO offers us more chances and challeges;adopting advanced,scienial,fitting internation and inner devel opment, and flexible management system,to enhance our force and develop our enterprise.“Setting up the great targe,Producing the toppest electric products” is our slogan,“regarding the customers as our center” and “developing the market based on our trademark” are our long-term management rule.We are trying our best to make our enterprise be a morden star enterprise with scienial mangement,advanced technology, great scale,high profit according to creating intelligents, enterprise culture,inventing system,maketing sales,establishing the figure and advancing the quality.

Newest Company Management System : 2015 standard requirement



INDEX

MINI CIRCUIT BREAKER	01
LEAKAGE CIRCUIT BREAKER	07
ISOLATING SWITCH/ISOLATING SWITCH	10
MOULDED CASE CIRCUIT BREAKER	11
SURGE PROTECTION DEVICE (SPD)	12
AC CONTACTOR	13
DIN RAIL TYPE ELECTRONIC ENERGY METER	15
WATER PROOF CABLE JOINT	17
FLOATING SWITCH OF ELECTRICAL PUMP	18
POWER SOCKET	20

DZ47-63 Mini Circuit Breaker



1. Application

MCB is applicable to a line of AC 50Hz,230V in single pole,400V in double,three,four poles for protecting overload and short circuit, and rated current up to 63A. It can also be used for infrequent line conversion under the normal condition.The breaker is applicable to lighting distribution system in industrial enterprise, commercially district, high-rise building and dwelling house. It conforms with the standards of IEC60898.

2. Main technical parameter

Type	MCB			
Pole	1P		2P, 3P, 4P	
Rated current (A)	6,10,16,20,25,32,40,50,63			
Rated voltage(V)	230		400	
Ambient temperature	-5℃~+40℃			
Type of instantaneous release	C	D	C	D
Rated short circuit breaking capacity Icn(KA)	1-32A: 6 50-63A:4.5	4.5	1-32A: 6 50-63A:4.5	4.5

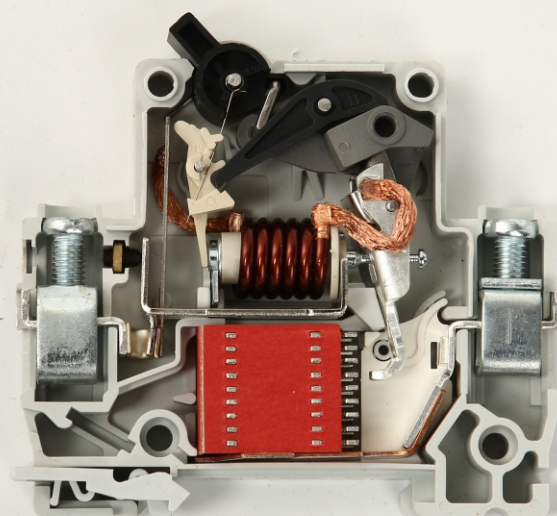
3. Applicable conducting wire

Rated current(A)	Normal cross section of wire mm²
1-6A	1
10A	1.5
16,20A	2.5
25A	4
32A	6
40,50A	10
63A	16

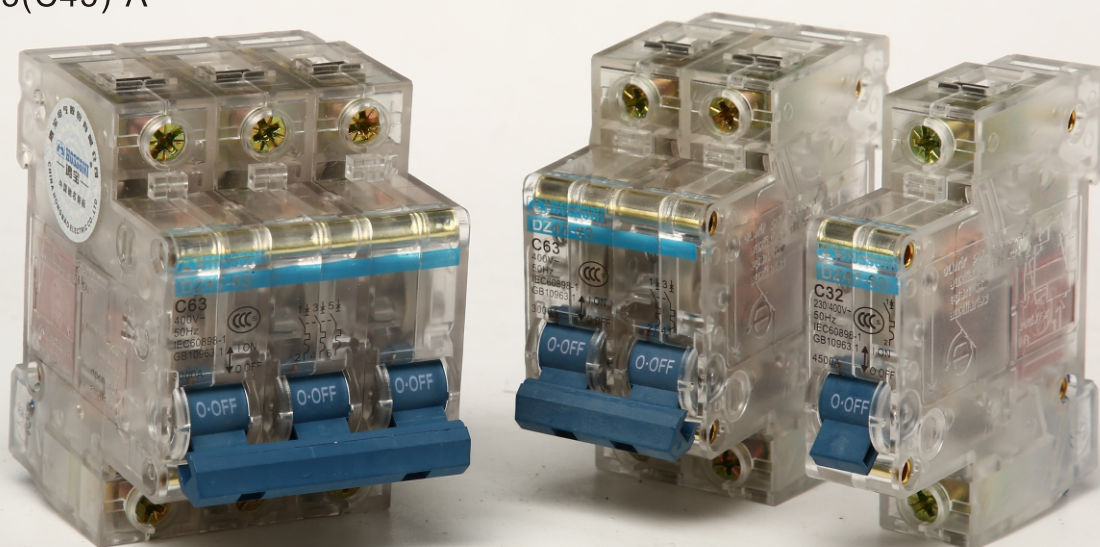
4. The over-current protection property

Ambient Temperature	Initial Status	Test Current	Expected Result	Expected Result	Note
30 ± 2°C	Cold position	1.13In	$t \leq 1h$	Non-release	-
	Carried out immediately after previous test	1.45In	$t < 1h$	Release	-
	Cold position	2.55In	$1s < t < 60s$ ($In \leq 32A$)	Release	Current smoothly rises to specified value within 5s
	Cold position	2.55In	$1s < t < 120s$ ($In > 32A$)	Release	
-5~+40°C	Cold position	3In	$t \leq 0.1s$	Non-release	Type B
	Cold position	5In	$t < 0.1s$	Release	Type B
	Cold position	5In	$t \leq 0.1s$	Non-release	Type C
	Cold position	10In	$t < 0.1s$	Release	Type C
	Cold position	10In	$t \leq 0.1s$	Non-release	Type D
	Cold position	20In	$t < 0.1s$	Release	Type D

Inside view



DZ47-63(C45)-A



DZ47-63(C45)-B



Mini Circuit Breaker

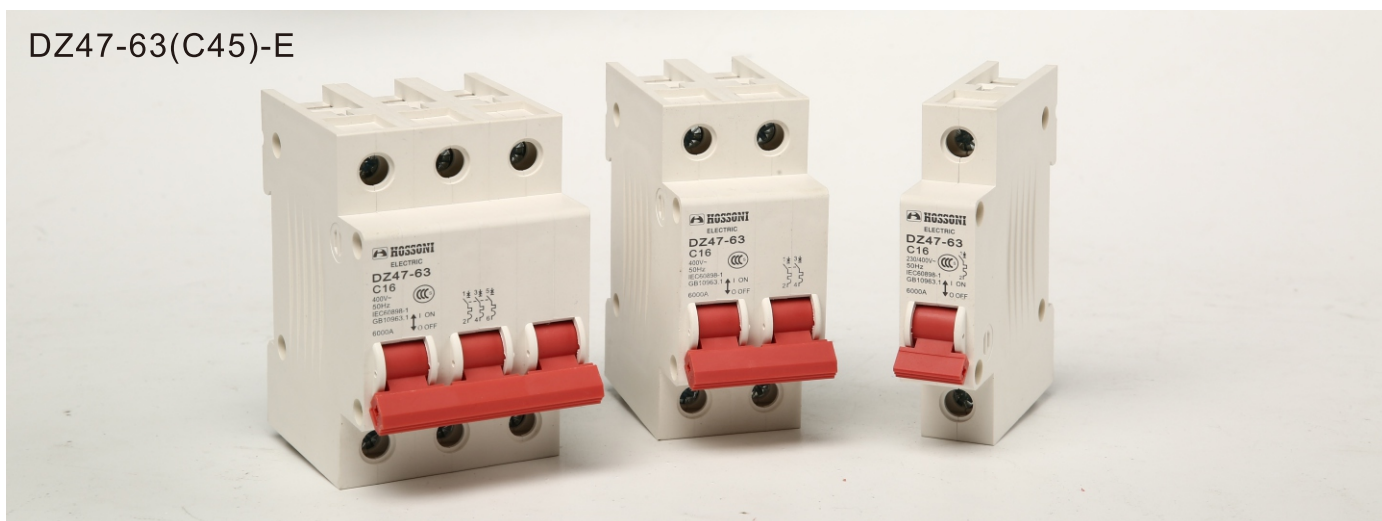
DZ47-63(C45)-C



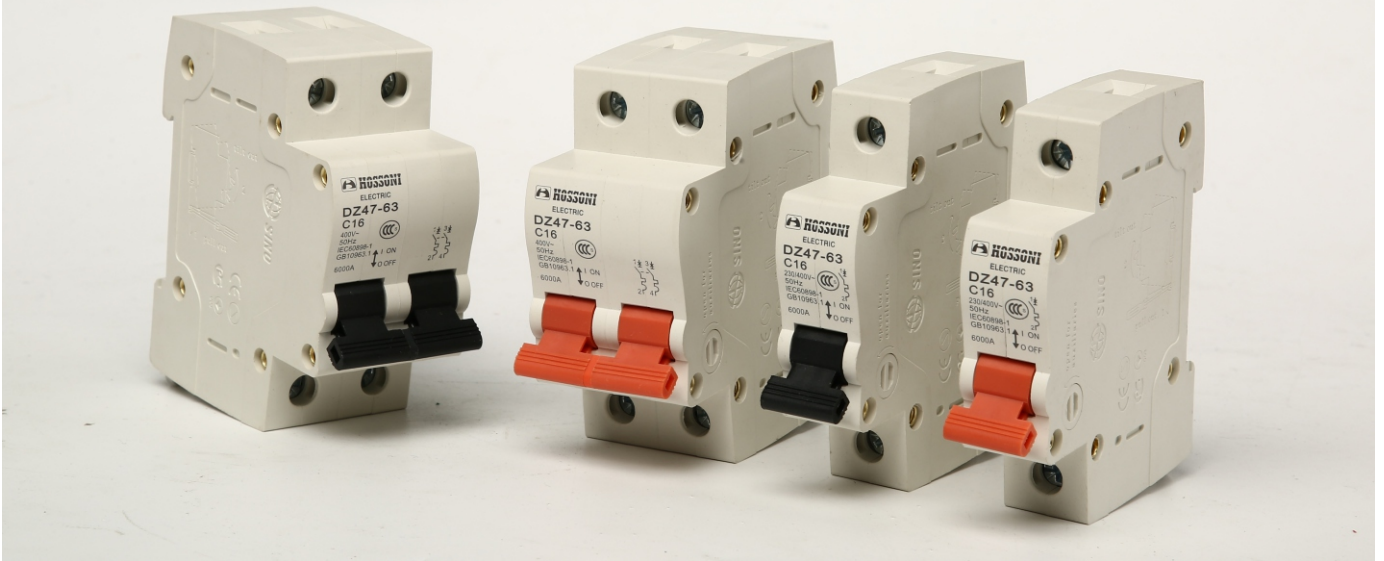
DZ47-63(C45)-D



DZ47-63(C45)-E



DZ47-63(C45)-F



DZ47-63-D(C45-D)



C65



DPN Series Miniature Circuit Breaker



1. Application

DPN is used in the single phase circuit of AC 50Hz/60Hz, rated voltage 230V or below for protecting circuit from overload and short circuit. This product has advantages of high breaking capacity, small volume, width is only 18mm. It conforms with the standards of IEC60898.

2. Main technical parameter

Type	DPN
Pole	1P+N
Rated current (A)	6, 10, 16, 20, 25, 32
Rated voltage(V)	230
Type of instantaneous release	C
Rated short circuit breaking capacity $I_{cn}(A)$	4500

3. Applicable conducting wire

Rated current(A)	Normal cross section of wire mm ²
$I_n \leq 6$	1
$6 < I_n \leq 13$	1.5
$13 < I_n \leq 20$	2.5
$20 < I_n \leq 25$	4
$25 < I_n \leq 32$	6

4. The over-current protection property

Ambient Temperature	Initial Status	Test Current	Expected Result	Expected Result	Note
30 ± 2°C	Cold position	1.13I _n	t ≤ 1h	Non-release	—
	Carried out immediately after previous test	1.45I _n	t < 1h	Release	—
	Cold position	2.55I _n	1s < t < 60s	Release	Current smoothly rises to specified value within 5s
-5~+40°C	Cold position	5I _n	t ≤ 0.1s	Non-release	Type C
	Cold position	10I _n	t < 0.1s	Release	Type C

NC100H Series Miniature Circuit Breaker



1. Application

NC100H is such features as delicate appearance, light weight, excellent and reliable performance, high breaking capacity, rapid tripping and mounted by rail. Its enclosure and components adopts high fire-retarding and shock-resistance plastic of long durability. It mainly serves for protecting the circuits of AC 50Hz, 230V of single pole, 400V of two poles or three or four poles from overload or short-circuit, and also for unfrequent making and breaking electrical apparatus and lighting circuit. It conforms with the standards of IEC60947-2.

2. Main technical parameter

Type	NC100H	
Pole	1P	2P, 3P, 4P
Rated current (A)	63,80,100	
Rated voltage(V)	230/400	400
Ambient temperature	-5°C~+40°C	
Rated short circuit breaking capacity I _{cn} (KA)	6	

3. Applicable conducting wire

Rated current(A)	Nominal cross section of wire mm ²
63A	16
80A	25
100A	35

4. The over-current protection property

Ambient Temperature	Initial Status	Test Current	Expected Result	Expected Result	Note
40 ± 2°C	Cold position	1.05I _n (I _n ≤ 63A)	t ≤ 1h	Non-release	—
	Cold position	1.05I _n (I _n > 63A)	t ≤ 2h	Non-release	—
	Carried out immediately after previous test	1.30I _n (I _n ≤ 63A)	t < 1h	Release	Current smoothly rises to specified value within 5s
		1.30I _n (I _n > 63A)	t < 2h	Release	
-5~+40°C	Cold position	8.00I _n	t ≤ 0.2s	Non-release	—
	Cold position	12.00I _n	t < 0.2s	Non-release	—

C45LE Leakage Circuit Breaker With Over-current Protection



1. Application

C45LE is applicable to a line of AC 50Hz/60Hz, rated voltage 230V for single pole two-wire, 2-pole or 400V for 3-pole, 3-pole 4-wire, 4-pole and rated current up to 40A. It can protect the line and motor from overload and short circuit. It can also be used for infrequent line conversion and infrequent motor start. It conforms with the standards of IEC61009.

2. Main technical parameter

Type	C45LE	
Pole	1P+N, 2P	3P, 3P+N, 4P
Rated current (A)	6, 10, 16, 20, 25, 32, 40, 50, 63	
Rated voltage (V)	230	400
Rated short circuit breaking capacity $I_{cn}(KA)$	6–32A:6/40–63:4.5	
Rated residual making/breaking capacity $I_{\Delta m}(A)$	2000	
Rated residual action current $I_{\Delta n}(A)$	0.03, 0.05, 0.1, 0.3	
Rated residual non-action current $I_{\Delta no}(A)$	0.5 $I_{\Delta n}$	

3. Applicable conducting wire

Rated current(A)	1–6A	10A	16, 20A	25A	32A	40, 50A	63A
Normal cross section of wire mm^2	1	1.5	2.5	4	6	10	16

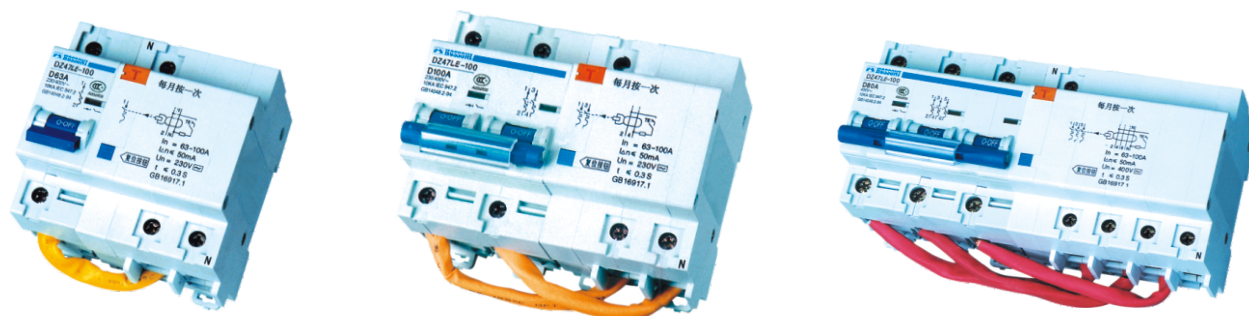
4. Residual current breaking time

I_n (A)	$I_{\Delta n}$ (A)	Breaking time(s) when equals to rating following					
		$I_{\Delta n}$	$2I_{\Delta n}$	$5I_{\Delta n}$	5, 10, 20, 50, 100, 200, 500 ^a (A)	$I_{\Delta t}^b$	
6–63	0.03, 0.05, 0.1, 0.3	0.1	0.06	0.04	0.04	0.04	

5. The over-current protection property

Ambient Temperature	Initial Status	Test Current	Expected Result	Expected Result	Note
30 ± 2°C	Cold position	1.13 I_n	$t \leq 1h$	Non-release	–
	Carried out immediately after previous test	1.45 I_n	$t < 1h$	Release	–
	Cold position	2.55 I_n	$1s < t < 60s$ ($I_n \leq 32A$)	Release	Current smoothly rises to specified value within 5s
	Cold position	2.55 I_n	$1s < t < 120s$ ($I_n > 32A$)	Release	
–5~+40°C	Cold position	3 I_n	$t \leq 0.1s$	Non-release	Type B
	Cold position	5 I_n	$t < 0.1s$	Release	Type B
	Cold position	5 I_n	$t \leq 0.1s$	Non-release	Type C
	Cold position	10 I_n	$t < 0.1s$	Release	Type C
	Cold position	10 I_n	$t \leq 0.1s$	Non-release	Type D
	Cold position	20 I_n	$t < 0.1s$	Release	Type D

NC100HLE Leakage Circuit Breaker With Over-current Protection



1. Application

NC100HLE is applicable to a line of AC 50Hz/60Hz, rated voltage 230V for single pole two-wire, 2-pole or 400V for 3-pole, 3-pole 4-wire, 4-pole and rated current up to 40A. It can protect the line and motor from overload and short circuit. It can also be used for infrequent line conversion and infrequent motor start. It conforms with the standards of IEC60947-2.

2. Main technical parameter

Type	NC100HLE	
Pole	1P+N, 2P	3P, 3P+N, 4P
Rated current (A)	63,80,100	
Rated voltage(V)	230	400
Rated short circuit breaking capacity I _{cn} (KA)	6	
Rated residual making/breaking capacity I _{Δm} (A)	2000	
Rated residual action current I _{Δno} (A)	0.03,0.1,0.3	
Rated residual non-action current I _{Δno} (A)	0.5I _{Δn}	
Over voltage protection grade	280V ± 5%	

3. Applicable conducting wire

Rated current(A)	63	80	100
Nominal cross section of wire mm ²	16	25	35

4. Residual current breaking time

I _n (A)	I _{Δn} (A)	Breaking time(s) when equals to rating following					
		I _{Δn}	2I _{Δn}	5I _{Δn}	5,10,20,50,100,200,500 ^③ (A)	I _{Δt} ^①	
6-63	0.03, 0.05, 0.1, 0.3	0.1	0.06	0.04	0.04	0.04	

5. The over-current protection property

Ambient Temperature	Initial Status	Test Current	Expected Result	Expected Result	Note
40 ± 2°C	Cold position	1.05I _n (I _n ≤ 63A)	t ≤ 1h	Non-release	—
	Cold position	1.05I _n (I _n > 63A)	t ≤ 2h	Non-release	—
	Carried out immediately after previous test	1.30I _n (I _n ≤ 63A)	t < 1h	Release	Current smoothly rises to specified value within 5s
		1.30I _n (I _n > 63A)	t < 2h	Release	
-5~+40°C	Cold position	8.00I _n	t ≤ 0.2s	Non-release	—
	Cold position	12.00I _n	t < 0.2s	Non-release	—

DPNL(HBDB1L) Leakage Circuit Breaker With Over-current Protection



1. Application

DPNL is used in the single phase circuit of AC 50Hz/60Hz, rate voltage 230V, used as electron shock protection. it can protect circuit form overload and short circuit. This product has advantages of small volume, high breaking capacity, live and zero wire are cut off at the same time, also protecting person from electric shock when the live wire connected opposite. It conforms with the standards of IEC61009.

2. Main technical parameter

Type	DPNL
Pole	1P+N
Rated current (A)	6, 10, 16, 20, 25, 32
Rated voltage(V)	230
Rated residual action current $I_{\Delta n}$ (A)	0.03
Rated residual non-action current $I_{\Delta no}$ (A)	0.015
Rated residual making/breaking capacity $I_{\Delta m}$ (A)	500
Type of instantaneous release	C
Rated making/breaking capacity I_m (A)	4500

3. Applicable conducting wire:

Rated current(A)	Normal cross section of wire mm ²
$I_n \leq 6$	1
$6 < I_n \leq 13$	1.5
$13 < I_n \leq 20$	2.5
$20 < I_n \leq 25$	4
$25 < I_n \leq 32$	6

4. Residual current breaking time

I_n (A)	$I_{\Delta n}$ (A)	Breaking time(s) when equals to rating following				
		$I_{\Delta n}$	$2I_{\Delta n}$	$5I_{\Delta n}$	5, 10, 20, 50, 100, 200, 500 ^a (A)	$I_{\Delta t}^b$
6-32	0.03	0.1	0.06	0.04	0.04	0.04

5.The over-current protection property

Ambient Temperature	Initial Status	Test Current	Expected Result	Expected Result	Note
30 ± 2°C	Cold position	1.13 I_n	$t \leq 1h$	Non-release	—
	Carried out immediately after previous test	1.45 I_n	$t < 1h$	Release	—
	Cold position	2.55 I_n	$1s < t < 60s$	Release	Current smoothly rises to specified value within 5s
-5~+40°C	Cold position	5 I_n	$t \leq 0.1s$	Non-release	Type C
	Cold position	10 I_n	$t < 0.1s$	Release	Type C

HBH3 Isolating Switch



Specification

AC 230/240, 400/415(4P)

Number of Poles	1P, 2P, 3P, 4P
Rated Current (A)	32,63,100
Rated Voltage (V)	AC 230/400(1P),400(2P/3P/4P)
Frequency	50/60Hz
Endurance	> 10000
Protection degree	IP20

SF Isolating Switch



Specification

Number of Poles	1P, 2P, 3P, 4P
Rated Current (A)	40,63
Rated Voltage (V)	AC 230/400(1P),400(2P/3P/4P)
Frequency	50/60Hz
Endurance	> 10000
Protection degree	IP20

M2 (HBM1) Moulded Case Circuit Breaker



1. Application

M2 series moulded case circuit breaker is one of products developed and manufactured by adopting international advanced technology. It is supplied with rated insulating voltage 800V and used for circuit of A.C. 50Hz, rated operating voltage AC 400V (or below), rated operating current up to 800A for infrequent changing over and starting of the motors. The products conform to IEC60947-2 standard.

2. Main technical parameter

Table 1

Type	Rated current (A)	Pole number	Rated insui- ating voltage (V)	Rated operating voltage (V)	Arcing-over distance (mm)	Ultimate short circuit breaking capacity (KA)	Services short circuit breaking capacity (KA)	Operation perform- ance		Utilization category
								Load	Unload	
M2-63L	(6), 10, 16, 20, 25, 32,	3, 4	500V	400V	0	25	18	1500	8500	A
M2-63M	40, 50, 63				0	50	35			
M2-100L	(10), 16, 20, 25, 32, 40, 50, 63, 80, 100				0(≤ 50)	35	22			
M2-100M					0(≤ 50)	50	35			
M2-100H					0(≤ 50)	85	50			
M2-225L	100, 125, 160, 180, 200, 225		≤ 50		35	22	1000	7000		
M2-225M			≤ 50		50	35				
M2-225H			≤ 50		85	50				
M2-400L	225, 250, 315, 350, 400		≤ 50		50	35	1000	4000		
M2-400M			≤ 100		65	42				
M2-630L	400		≤ 100		50	35				
M2-630M	500		≤ 100		65	42				
M2-630H	630		≤ 100		100	65				
M2-800M	630, 700, 800		≤ 100		75	50				
M2-800H			≤ 100		100	65				
M2-1250M	1000, 1250		≤ 100		100	65				
M2-1250H			≤ 100		125	75				

Note: 6A no thermal protection

The N-pole of four-poles breaker is sified at the right side of the product has four types:

Type A: No current trip-lease on N pole which making all the time, not closing and opening with the other three poles.

Type B: No current trip-release on N pole which closing and opening with the other poles.

Type C: With current trip-release which closing and opening with the other three poles.

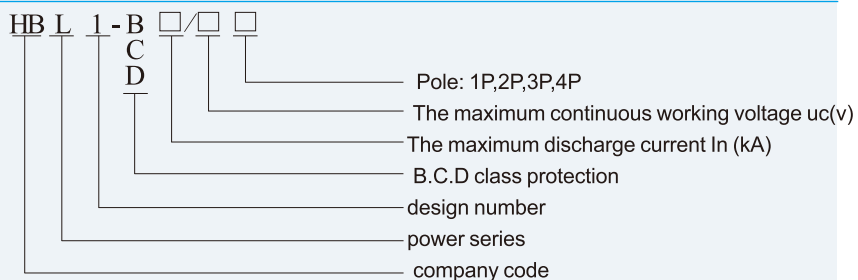
Type D: With current frip-release which making all the time not closing and opening with the other three poles.

HBL1-B/C/D(SPD) surge protection device

Using Scope

HBL1 series SPD is used for power supply system such as TT, TN-S, TN-C, IT with AC 50/60 HZ and rated voltage up to 380v, it can make surge protection on the instant voltage of the indirect and direct stroke.
SPD has MC and MD protection mode.
SPD works as per GB18802.1/IEC61643-1

Size and meaning



Main Parameter

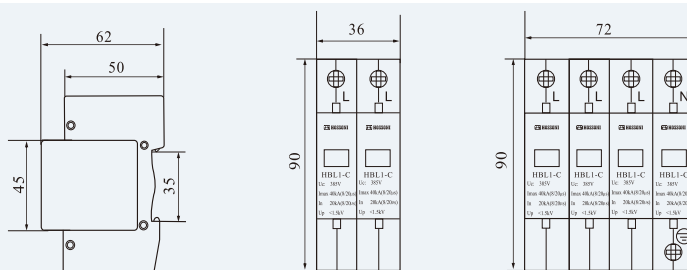
	pole	voltage Un(V)	max continuous working voltage Uc (V)	voltage protection level Up(kV)	discharge current Imax(kA)	In(kA)	response time(s)	working environment	usage
HBL1-C	1P	220	320/385/420	1.5	40	20	<25	-40℃~ +70℃ humidity ≤90%	class 2 protection (incoming)
	2P			1.5					
	3P	380	385/420	1.5					
	4P	380	385/420	1.5					
HBL1-D	1P	380/220	320/385/420	2/1.5	20	10	<25	-40℃~ +70℃ humidity ≤90%	class 2 protection (incoming)
	1P+N								
	2P								
	2P+N								
	3P	380	385/420	2					
	3P+N	380/220	320/385/420	2/1.5					
4P	380	385/420	2						

Structure

- SPD is one port, electric-shock protection, installed in the room, the voltage is restricted.
 - There is built-in disconnector in SPD, when SPD is faulty due to overheat, breakdown, the disconnector can automatically make the SPD disconnected with grid and give indicator at the same time. The window shows green color when SPD is working at normal situation, and the window shows red color when there is faulty.
- The SPD 1p+n, 2p+n, 3P+N is made of SPD+NPS zero ground protection module, and it applies to power supply system such as TT, TN-S

Installation and outline size

- It is installed in LPOZ1, or the boarder between LPZO2 and LPZOB, and it adopts standard 35mm track to install. The connected copper wire is 4-35mm², and the length is less than 500mm.
- Each pole of SPD should be protected--use fuse or mcb.



LC1-D Series AC Contactor



1. Application

LC1-D series AC Contactor is suitable for using in the circuits up to the rated voltage 660V AC 50Hz or 60Hz, rated current up to 620A, for making, breaking, frequently starting & controlling the AC motor. Combined with the auxiliary contact block, timer delay & machine-interlocking device etc, it becomes the delay contactor, mechanical interlocking contactor, star-delta starter. With the thermal relay, it is combined into the electromagnetic starter. The product conforms to IEC60947-4-1 standard.

2. Specification

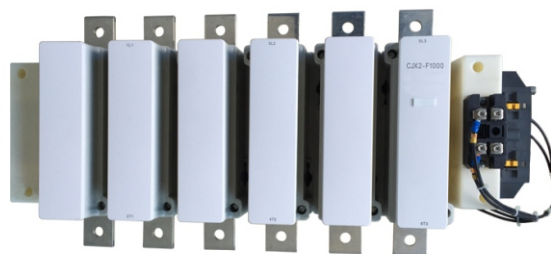
Type		LC1 –D09	LC1– D12	LC1– D18	LC1– D25	LC1– D32	LC1– D40	LC1– D50	LC1– D65	LC1– D80	LC1– D95
Rated working current (A)	AC3	9	12	18	25	32	40	50	65	80	95
	AC4	3.5	5	7.7	8.5	12	18.5	24	28	37	44
Standard power ratings of 3–phase motors 50/60Hz in category AC–3	220/230V	2.2	3	4	5.5	7.5	11	15	18.5	22	25
	380/400V	4	5.5	7.5	11	15	18.5	22	30	37	45
	415V	4	5.5	9	11	15	22	25	37	45	45
	500V	5.5	7.5	10	15	18.5	22	30	37	55	55
	660/690V	5.5	7.5	10	15	18.5	30	33	37	45	55
Rated heat current (A)		20	20	32	40	50	60	80	80	125	125
Electrical life	AC3 (x10 ⁴)	100	100	100	100	80	80	60	60	60	60
	AC4 (x10 ⁴)	20	20	20	20	20	15	15	15	10	10
Mechanical life (x10 ⁴)		1000	1000	1000	1000	800	800	800	800	600	600
Number of the contacts		3P+NO					3P+NC+NO				
		3P+NC									

Type		LC1-D115	LC1-D150	LC1-D170	LC1-D205	LC1-D245	LC1-D300	LC1-D410	LC1-D475	LC1-D620
Rated working current (A)	AC3	115	150	170	205	245	300	410	475	620
	AC4	52	60	75	85	105	117	138	147	180
Standard power ratings of 3-phase motors	220/230V	30	40	55	63	75	100	110	147	200
	380/400V	55	75	90	110	132	160	220	265	335
	415V	59	80	100	110	132	180	220	280	375
50/60Hz in category AC-3	500V	75	90	110	129	160	200	250	355	400
	660/690V	80	100	110	129	160	220	280	355	450
Rated heat current (A)		200	250	250	275	315	400	500	700	1000
Electrical life	AC3 (x10 ⁴)	200	60	60	50	50	50	30	30	20
	AC4 (x10 ⁴)	15	15	15	15	15	15	8	8	5
Mechanical life (x10 ⁴)		300	300	300	300	300	300	100	100	100

LC1-F (CJX2-F) AC Contactor



CJX2-F150



CJX2-F1000

1. Application

LC1-F AC contactor is suitable for using in the circuits up to the rated voltage 380V AC 50Hz, current 800A, for long distance breaking circuit and frequently starting or controlling the motor. It also can be used for the control of distribution circuits of rated current from 200A to 1500A. It conforms to IEC60947-4-1.

2. Specification

Type	Rated operational current in AC-3(A)	Max power ratings of 3-phase motors in category AC-3(KW)							Operating frequency(time/hour) AC-3	Electrical life AC-3 x10 ⁴	Mechanical life x10 ⁴
		220V 230V	380V 400V	415V	440V	500V	666V 690V	1000V			
LC1-F115	115	30	55	59	59	75	80	65	1200	120	1000
LC1-F1154	115	30	55	59	59	75	80	65	1200	120	1000
LC1-F150	150	40	75	80	80	90	100	65	1200	120	1000
LC1-F1504	150	40	75	80	80	90	100	65	1200	120	1000
LC1-F185	185	55	90	100	100	110	110	100	600	100	600
LC1-F1854	185	55	90	100	100	110	110	100	600	100	600
LC1-F225	225	63	110	110	110	130	129	100	600	100	600
LC1-F2254	225	63	110	110	110	130	129	100	600	100	600
LC1-F265	265	75	132	140	140	160	160	147	600	80	600
LC1-F2654	265	75	132	140	140	160	160	147	600	80	600
LC1-F330	330	100	160	180	200	200	220	160	600	80	600
LC1-F3304	330	100	160	180	200	200	220	160	600	80	600
LC1-F400	400	110	200	220	250	257	280	185	600	80	600
LC1-F4004	400	110	200	220	250	257	280	185	600	80	600
LC1-F500	500	147	250	280	295	355	335	335	600	80	600
LC1-F5004	500	147	250	280	295	355	335	335	600	80	600
LC1-F630	630	200	335	375	400	400	450	450	600	80	600
LC1-F6304	630	200	335	375	400	400	450	450	600	80	600
LC1-F780	780	220	400	425	425	450	475	40	600	80	600
LC1-F7804	780	220	400	425	425	450	475	450	600	80	600
LC1-F800	800	250	450	450	450	450	470	450	600	80	600

Din Rail Type Eletronic Energy Meter



1. 产品简介 Product Brief Intorduction

DSD7171 type electronic single-phase watt-hour meter adopt exclusiveuse LSI, the device typifying new periphery component, simple structure, high reliability, low power onsumption, long life etc, is suitable for the single-phase AC active electric energy with rated frequency of 50Hz. The performance is in conformity with the technical requirements for Single-phase Electronic Watt-hour Meter stipulated in GB/T17215-2002 class 1 and 2 Static AC Active Watt-hour Meter standard.

2. 功能及特点 Function and Features

- Measure active electric energy, do not need calibrate for long-term operation;
- Adopt the special chip of measurement ADE7755;
- Adopt the latest oversea electric energy special integration circuit, greatly improved dynamic working range of Meter; to make the ability of actual overload up to over 10 times.
- Have good mistake linearity in the range of 5%Ib-Imax;
- Few periphery components, simple structure, low power consumption;
- Adopt high reliability and long life electronic components, so the Meter assume feature of
- high reliability and long life.

3. 主要技术参数 Main Technical Data

额定电流 Rated Current (A)	1.5(6)、2.5(10)、5(20)、5(30)、10(40)、10(60)、15(60)、20(80)、30(100)
额定电压 Rated Voltage(A)	220或240 220or240
额定频率 Rater voltage(Hz)	50或60 50or60
准确度等级 Accuracy class	1级或2级 class1orclass2



Din Rail Type Eletronic Energy Meter



1. 产品简介 Product Brief Intorduction

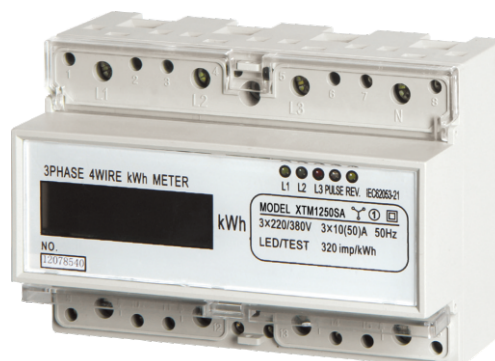
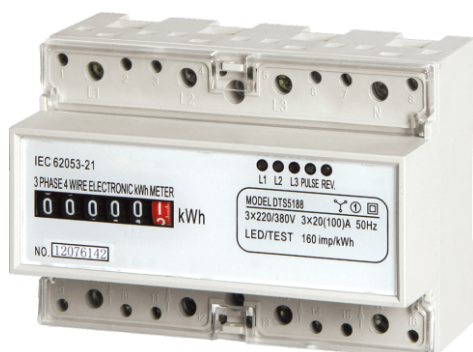
DTS7171 type electronic three-phase watt-hour meter is adopted latest microelectronic technology; used to measure active electric energy of three-phase A.C whole rated frequency is 50/60Hz, coordination meter age of positive and negative. This series Meter have tow mode of cut-over: cut-over directly and cut-over by mutual inductance electronics. The performance is in conformity with the technical requirements for three-phase Electronic Watt-hour Meter stipulated in GB/T 17215-2002 Class 1 and 2 Static A.C Active Watt-hour Meter standard.

2. 功能及特点 Function and Features

- Measure three-phase active electric energy, do not need calibrate for long-term operation;
- Three phase power supply,, loss one (any one wire of three-wire) or two (any two wireof four-wire) phase, uninfected measurement;
- Wide service temperature range;
- Assuming function of defect phase indication or voltage indication.
- Way of display:register、LCD, digital tube.
- Remote interruption of power supply function.
- Output interface Rs485.

3. 主要技术参数 Main Technical Data

额定电流 Rated Current(A)	3X1.5 (6) 、 3X5 (20) 、 3X10 (40) 、 3X15 (60) 、 3X20 (80) 、 3X30(100)
额定电压 Rated Voltage(V)	三相三线 3X100V或3X380V 三相四线 3X220/380V或3X57.7/100V Three-phase three-wire3X100Vor3X380V Three-phase four-wire3X220/380Vor3X57.7/100V
额定频率 Rated Frequency(Hz)	50或60 50or60
准确度等级 Accuracy Class	1级或2级 class1orclass2



Water Proof Cable Joint

WATERPROOF CABLE JOINT

A JOINT FOR PROTECTION OF CABLE SAFETY AND CONNECTION.



Waterproof



Durable



Convenient



High quality



Type M	Cable sizeφ (mm)	Thread size (mm)	thread length (mm)
M12x1.5	3-6.5	12	8
M16x1.5	4-8	16	8
M18x1.5	5-10	18	9
M20x1.5	6-11	20	9
M22x1.5	10-14	22	10
M24x1.5	10-14	24	10
M25x1.5	11-15	25	10
M27x1.5	13-18	27	11
M30x1.5	16-21	30	11
M32x1.5	16-21	32	11
M36x1.5	18-25	36	12
M40x1.5	22-33	40	15
M50x1.5	32-38	50	17
M63x1.5	29-35	63	20



Type PG	Cable sizeφ (mm)	Thread size (mm)	thread length (mm)
PG7	3-6.5	12.6	8
PG9	4-8	15.1	8
PG11	5-10	18.6	9
PG13.5	6-12	20.3	9
PG16	10-14	22.5	10
PG19	12-15	23.7	10
PG21	13-18	28	12
PG25	16-21	29.6	12
PG29	18-25	36.8	12
PG36	22-32	46.5	16
PG42	32-38	54	18
PG48	37-44	59	20
PG63	42-50	70	28

FLOATING SWITCH OF ELECTRICAL PUMP

The device, connected to an electrical pump through an electrical cable, is used for the auto-control and no-water protection of the water tower and water pool.

1. TECHNICAL DATA:

- * Rated Voltage: AC 125V/250V
- * Max. Current: 16(8)A
- * Frequency: 50-60Hz
- * Max. Operating Temperature: 50°C
- * Protection Grade: Ip68

2. INSTALLATION:

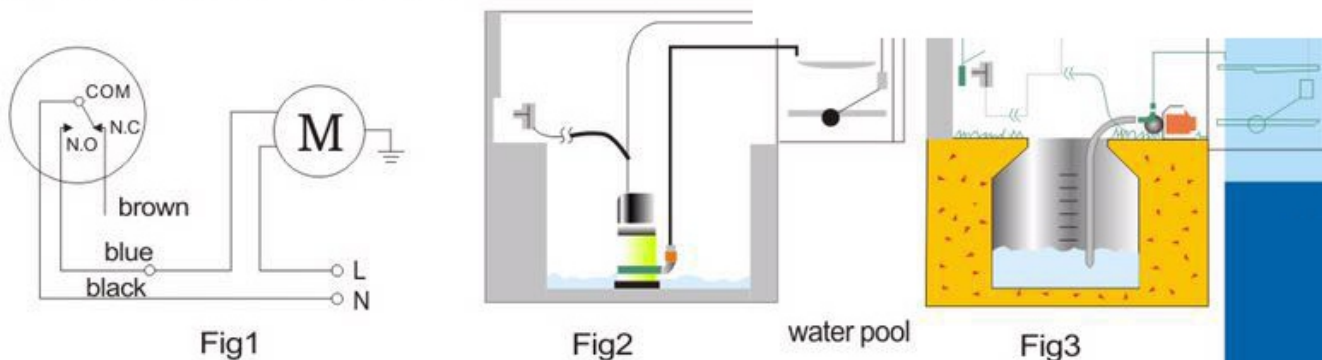
- (1) Fix the counterweight on the power cable to control water level. (Counterweight is only provided at request.)
- (2) Connect the electrical cable with the electrical pump and then fix it inside the water tank.
- (3) The length of the cable section between the fixation point of the device and the device body determines the water level.
- (4) The terminal of the electrical cable shall never be immersed into water during installation.



Length	2M	3M	4M
Weight	530g	620g	695g

3. INSTRUCTION FOR USAGE:

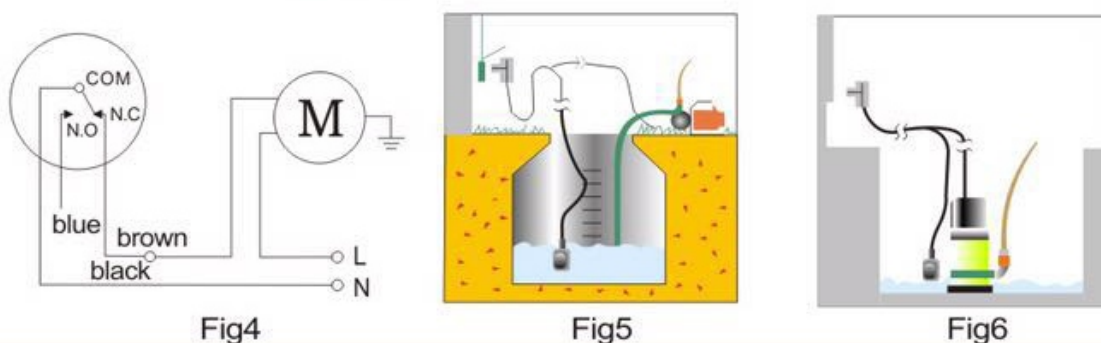
- (1) Instruction for water-filling operation:



Connect the blue cable of the floating control to the electrical pump and the black one to a neutral wire as shown in Fig.1 for water filling operation (The brown cable shall be kept insulated). For detailed installation instruction, please refer to Fig.2 and 3.

Function of Fig2 & 3. Electrical pump begins to fill water when the water in water tank drops to a certain level and stops its working when water rises to certain level.

- (2) Instruction for water-emptying operation:



DIRECTION FOR USE

Miniature Circuit Breaker Accessories



200B



S201



ON-GFFS



L7(NEW)

Modular Indicator



C45D



SV1



C45DN

Modular Socket



ADC-1



ADC-2



ADC-3



ADC-4



ADC-5

Door bell



SU213



SU213N



TSBY-8

Switch

Power Socket





HONGBAO ELECTRIC GROUP CO.,LTD.
HONGBAO POWER SUPPLY CO.,LTD.

www.hossoni.com

Address: Xiangyang Industrial Zone, Liushi Town, Yueqing City, Zhejiang, P.R.CHINA 325604

EPS Emergency Power Supply UPS Uninterrupted Power Supply Frequency Converter Solar/Wind Energy Power Generating System
Soft Starter Switching Power Supply Stabilized Voltage Power Supply Voltage Regulator Charger Transformer Storage Battery
Inverter Electric Automobile/Motor Controller Circuit Breaker Architectural Electrical Equipment